

HUBBELL-PRO PLUG & CONNECTOR BOOTS

KEY FEATURES:

- Overlapping seal for improved protection in wet and damp locations

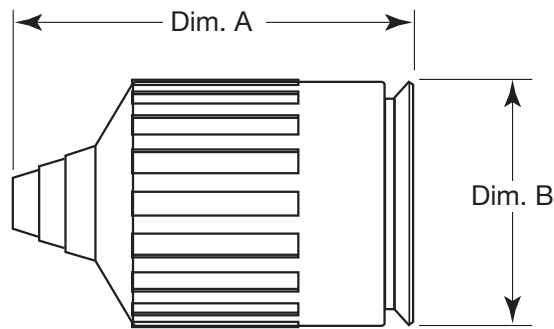


HBP1
HBP2

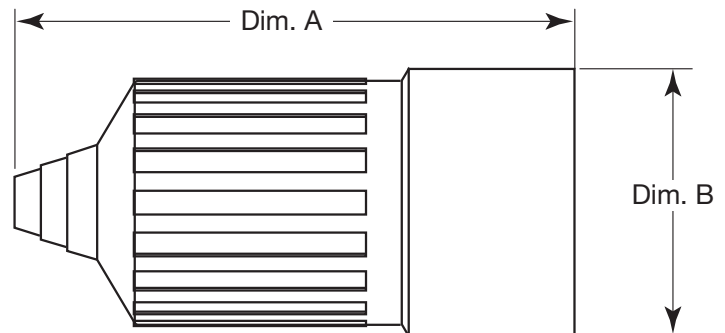


HBC1
HBC2

DIMENSIONS



HBP1
HBP2



HBC1
HBC2

MATERIALS

Part	Description
Plug Boot	Thermo plastic elastomer, black
Connector Boot	Thermo plastic elastomer, black

Catalog Number	Dim. A	Dim. B	For use with the following:
HBP1	2.8" (71 mm)	Ø 1.7" (44 mm)	15A Locking HUBBELL-PRO Plugs and 15 & 20A Straight Blade HUBBELL-PRO Plugs
HBP2	3.9" (98 mm)	Ø 2.4" (60 mm)	20 & 30A Locking HUBBELL-PRO Plugs
HBC1	3.8" (96 mm)	Ø 2.0" (51 mm)	15A Locking HUBBELL-PRO Connectors and 15 & 20A Straight Blade HUBBELL-PRO Connectors
HBC2	5.4" (137 mm)	Ø 2.6" (66 mm)	20 & 30A Locking HUBBELL-PRO Connectors